

# Telangana: Disease Burden Profile, 1990 to 2016

## 1990 life expectancy

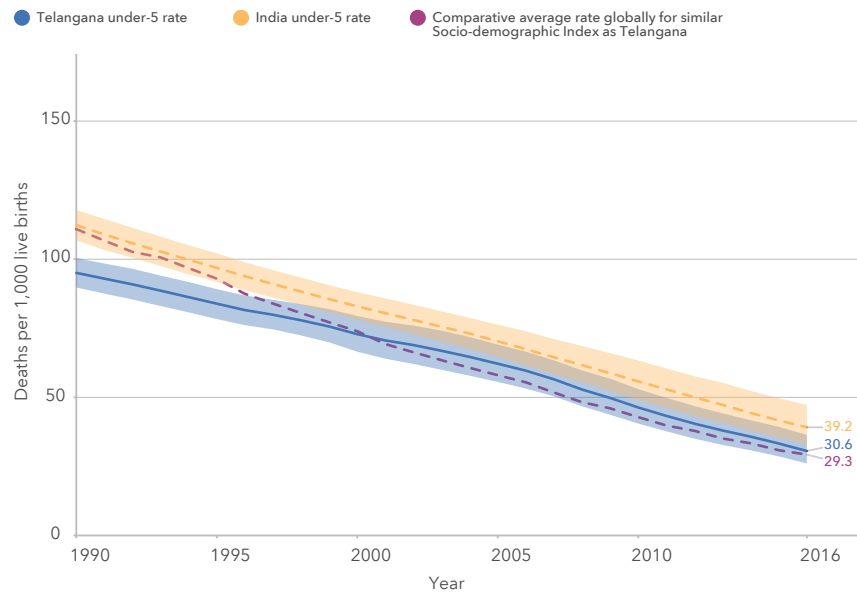
Females: 61.8 years Males: 60.2 years

## 2016 life expectancy

Females: 73.2 years Males: 69.4 years

## How much did the under-5 mortality rate change from 1990 to 2016?

Under-5 mortality rate, both sexes combined, 1990-2016

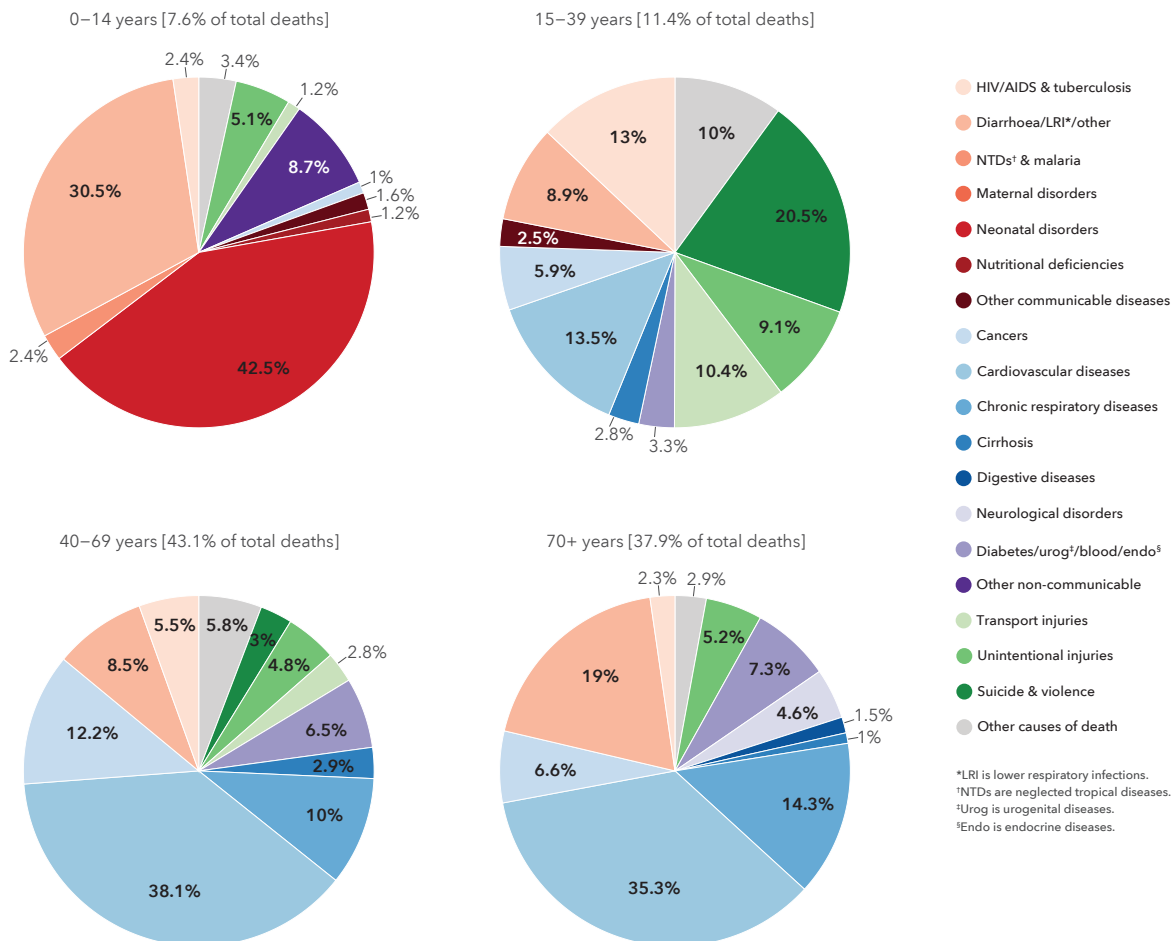


The state of Telangana was carved out from Andhra Pradesh in 2014. Estimates for Telangana prior to 2014 were computed for comparison by disaggregating data from its parent state based on its current district composition.

The shaded bands indicate 95% uncertainty intervals around the estimates

## What caused the most deaths in different age groups in 2016?

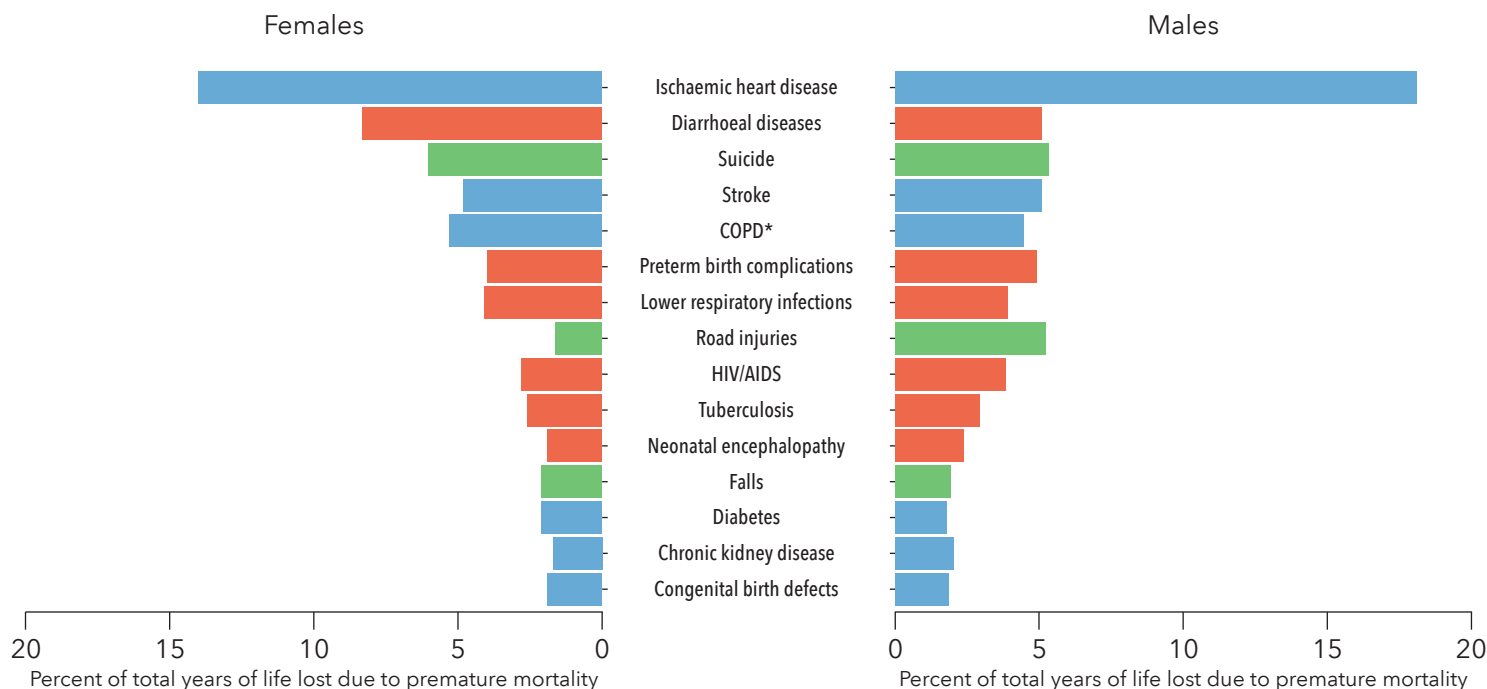
Percent contribution of top 10 causes of death by age group, both sexes, 2016



**Proportion of total disease burden from:**  
 Premature death: 61.6% | Disability or morbidity: 38.4%

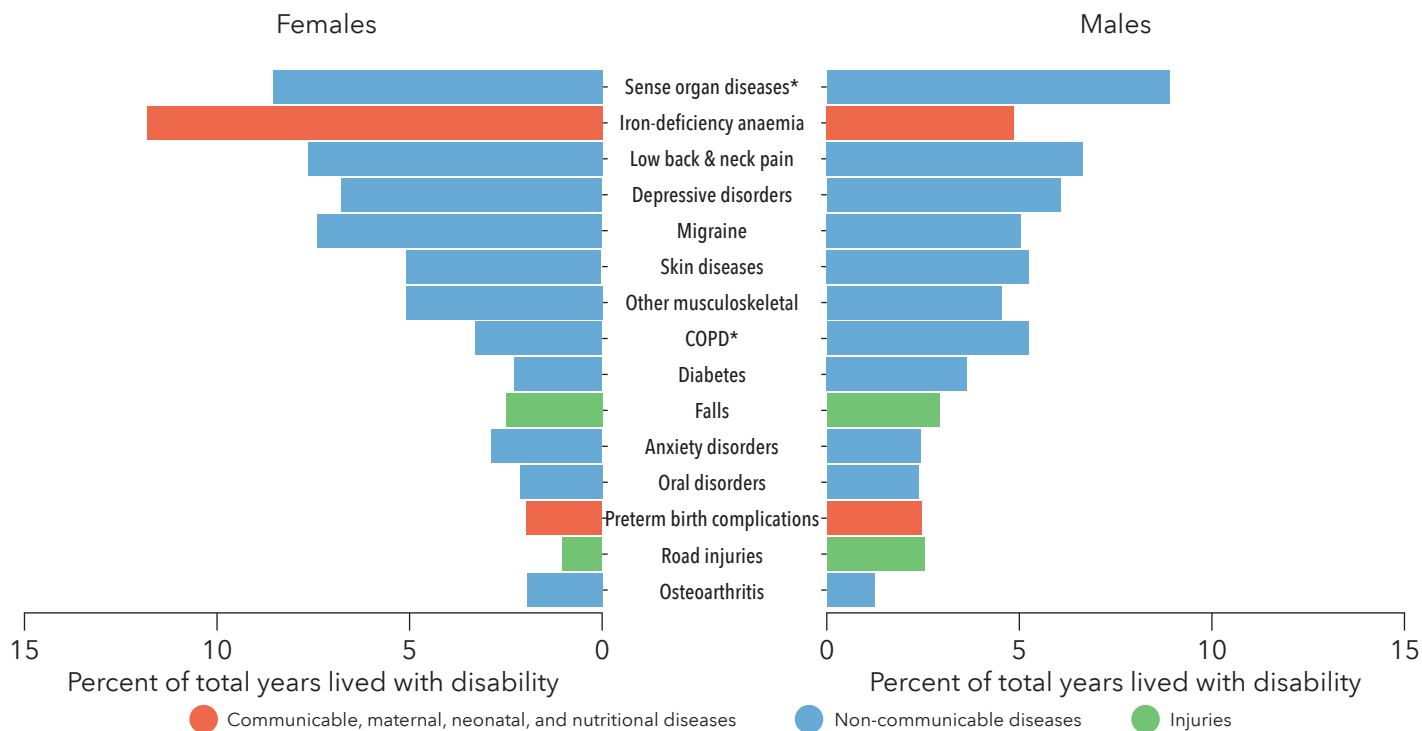
**What caused the most years of life lost, by sex, in 2016?**

Top 15 causes of YLLs, ranked by percent for both sexes combined, 2016



**What caused the most years lived with disability, by sex, in 2016?**

Top 15 causes of YLDs, ranked by percent for both sexes combined, 2016



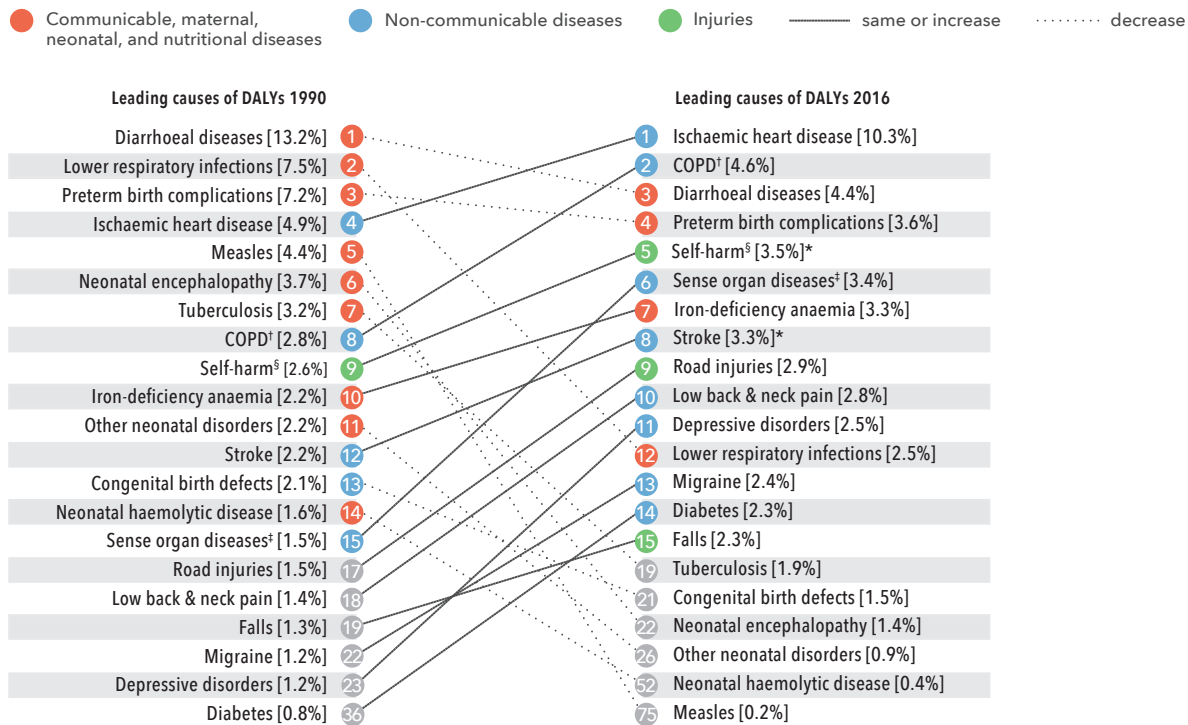
● Communicable, maternal, neonatal, and nutritional diseases ● Non-communicable diseases ● Injuries

\*COPD is chronic obstructive pulmonary disease.

\*Sense organ diseases includes mainly hearing and vision loss.

# Proportion of total disease burden from: CMNNDs: 27.6% | NCDs: 59.2% | Injuries: 13.2%

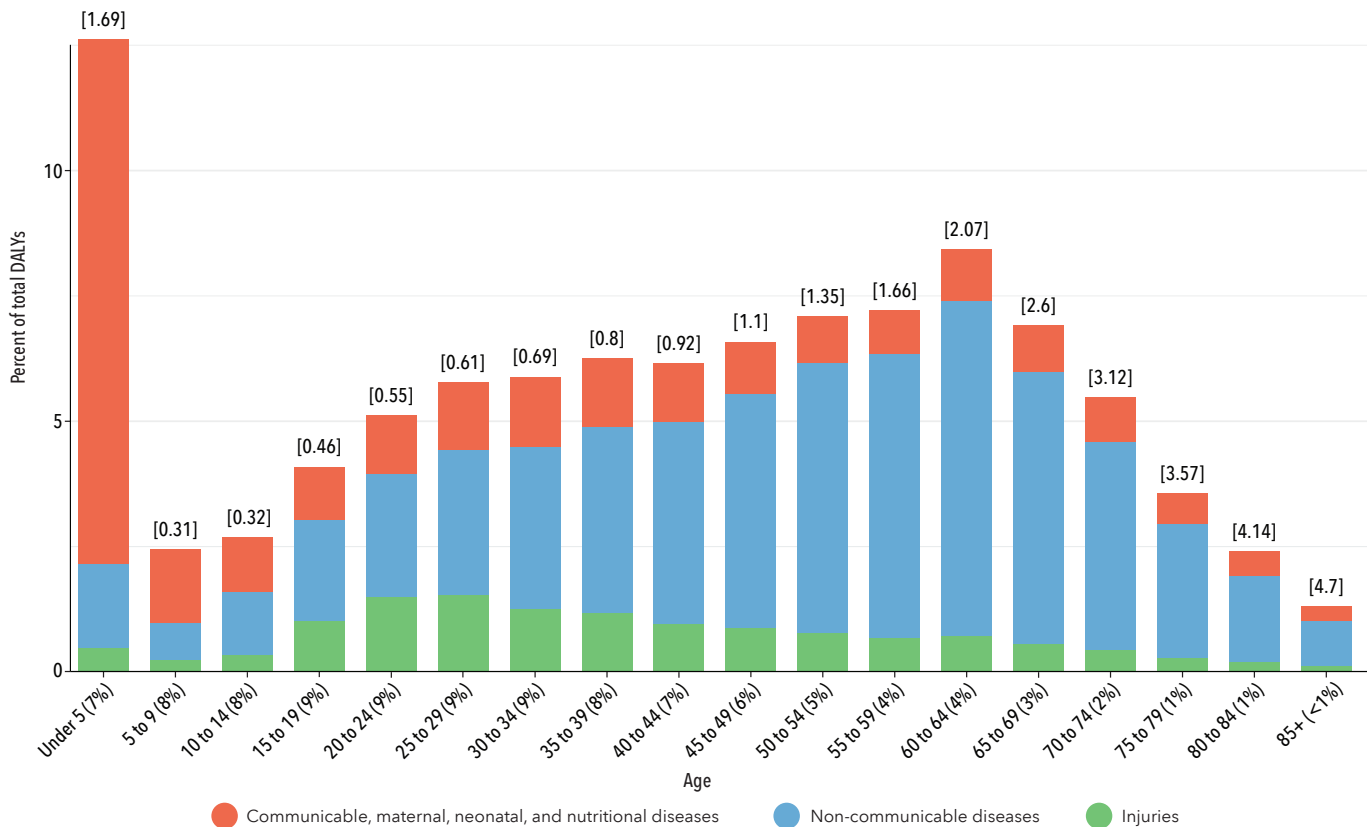
How have the leading causes of death and disability combined changed from 1990 to 2016?  
Change in top 15 causes of DALYs, both sexes, ranked by number of DALYs, 1990-2016



\*Change not significant.  
The percent figure in brackets next to each cause is DALYs from that cause out of total DALYs.

<sup>†</sup>COPD is chronic obstructive pulmonary disease.  
<sup>‡</sup>Sense organ diseases includes mainly hearing and vision loss.  
<sup>§</sup>Self-harm refers to suicide and the nonfatal outcomes of self-harm.

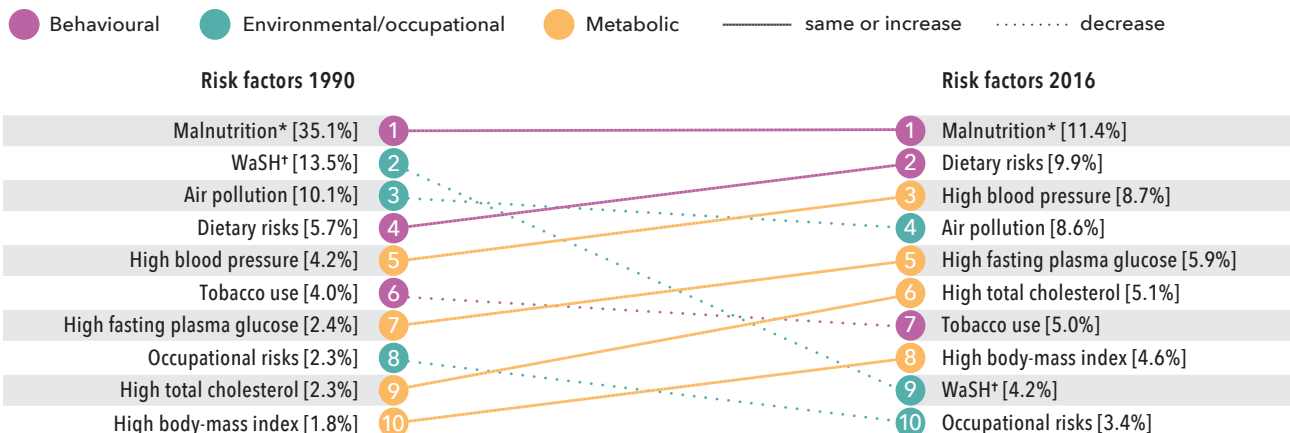
## What caused the most death and disability combined across age groups in 2016? Percent of DALYs by age group, both sexes, 2016



The number in the bracket on top of each vertical bar is the ratio of percent DALYs to population for that age group. The number in parentheses after each age group on the x-axis is the percent of population in that age group.

## What risk factors are driving the most death and disability combined?

Contribution of top 10 risks to DALYs number, both sexes, ranked by number of DALYs, 1990-2016

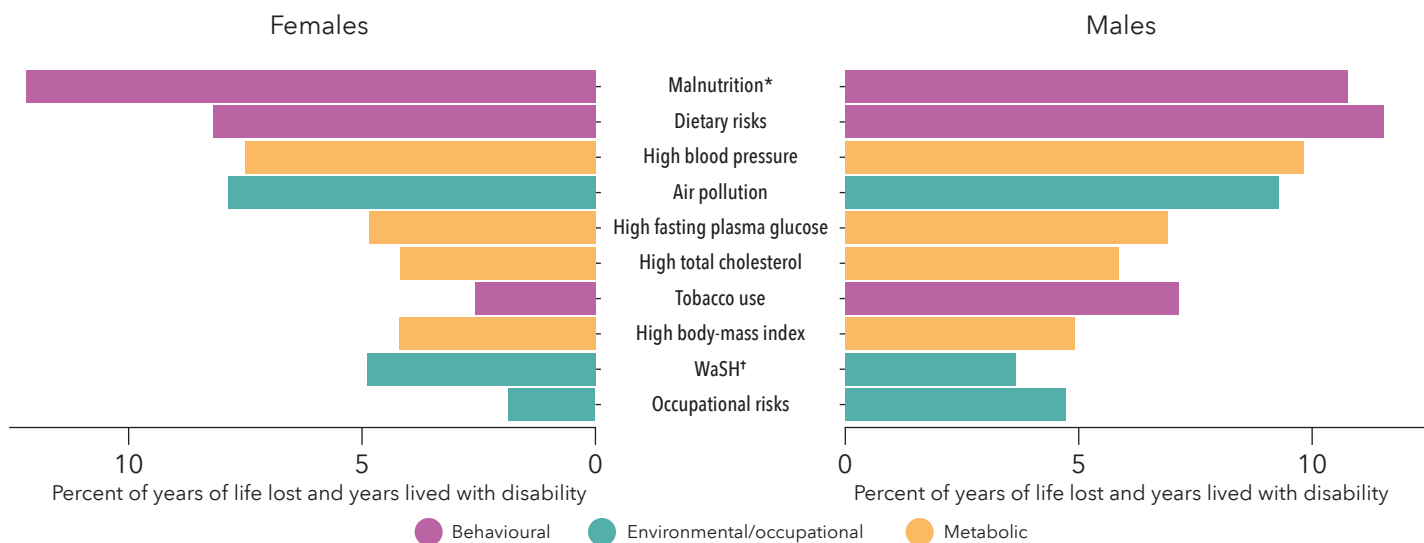


The percent figure in bracket next to each risk is DALYs from that risk out of total DALYs.

\*Malnutrition is child and maternal malnutrition.  
†WaSH is unsafe water, sanitation, and handwashing.

## How did the risk factors differ by sex in 2016?

Percent of total DALYs attributable to top 10 risks, ranked by percent for both sexes combined, 2016



\*Malnutrition is child and maternal malnutrition.  
†WaSH is unsafe water, sanitation, and handwashing.